

**1st Mile - 320m to first turn  
1340m total before leaving  
grandstand area**

**2nd Mile - Spectator path  
directly beside the course all  
the way to the turn around  
point. Hill at turn around point  
which is just over half way thru  
race.**

**3rd Mile - Same loop as  
beginning with finish directly in  
front of grandstands**

**Half of the race is located directly in front of  
grandstands. The 1 mile point is about 200m  
inside gates. There is a shelter house around  
the 1 mile that makes the rest visible from a  
distance if you dont want to go that far.**

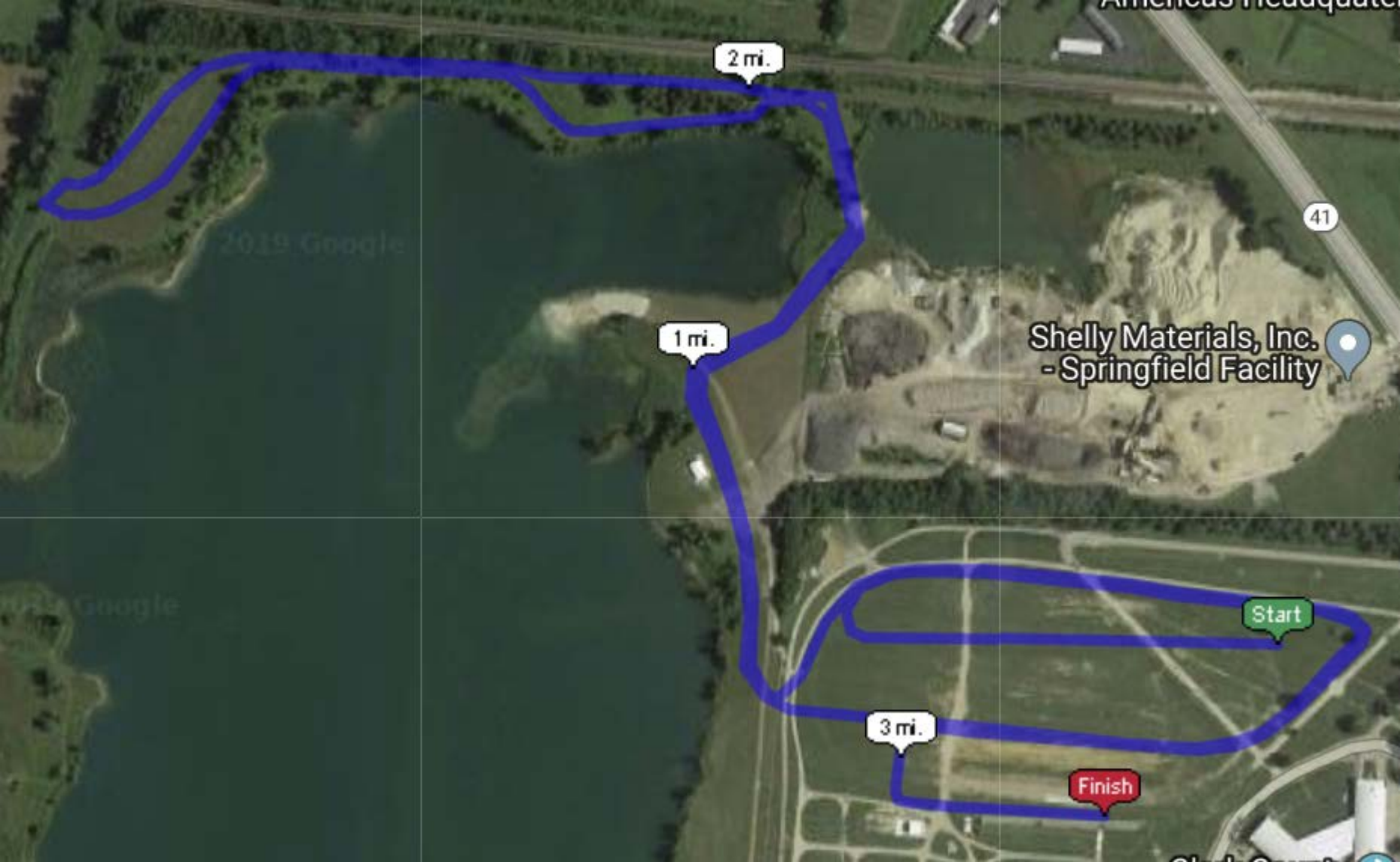
**Easy access from I-70  
with 4 lane highway in  
and out. Multiple  
entrances for access for  
school transportation and  
spectators**

Everything within  
the puple area is  
available for  
parking with  
enough spaces for  
around 5000  
vehicles. Overflow  
parking can be  
available also in a  
field across the  
street on  
laybourne road.



**schools entrance**





2 mi.

1 mi.

3 mi.

Start

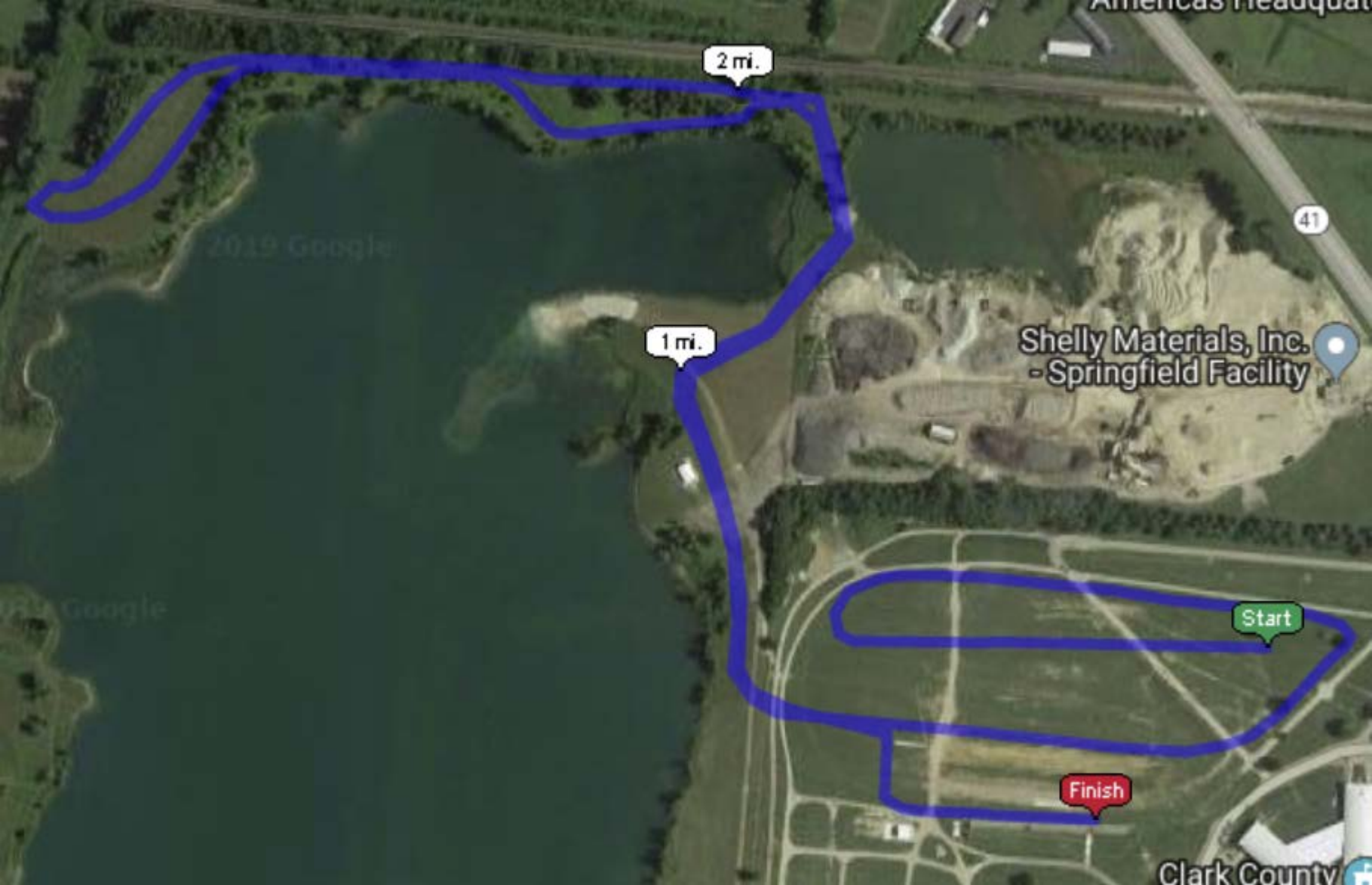
Finish

Shelly Materials, Inc.  
- Springfield Facility

41

2019 Google

© 2019 Google



2 mi.

41

2019 Google

1 mi.

Shelly Materials, Inc.  
- Springfield Facility

Start

Finish

Google

Clark County





S Charleston Pke

41

1 mi.

Shelly Materials, Inc.  
- Springfield Facility

Start

Finish





1 mi.

Start

Finish