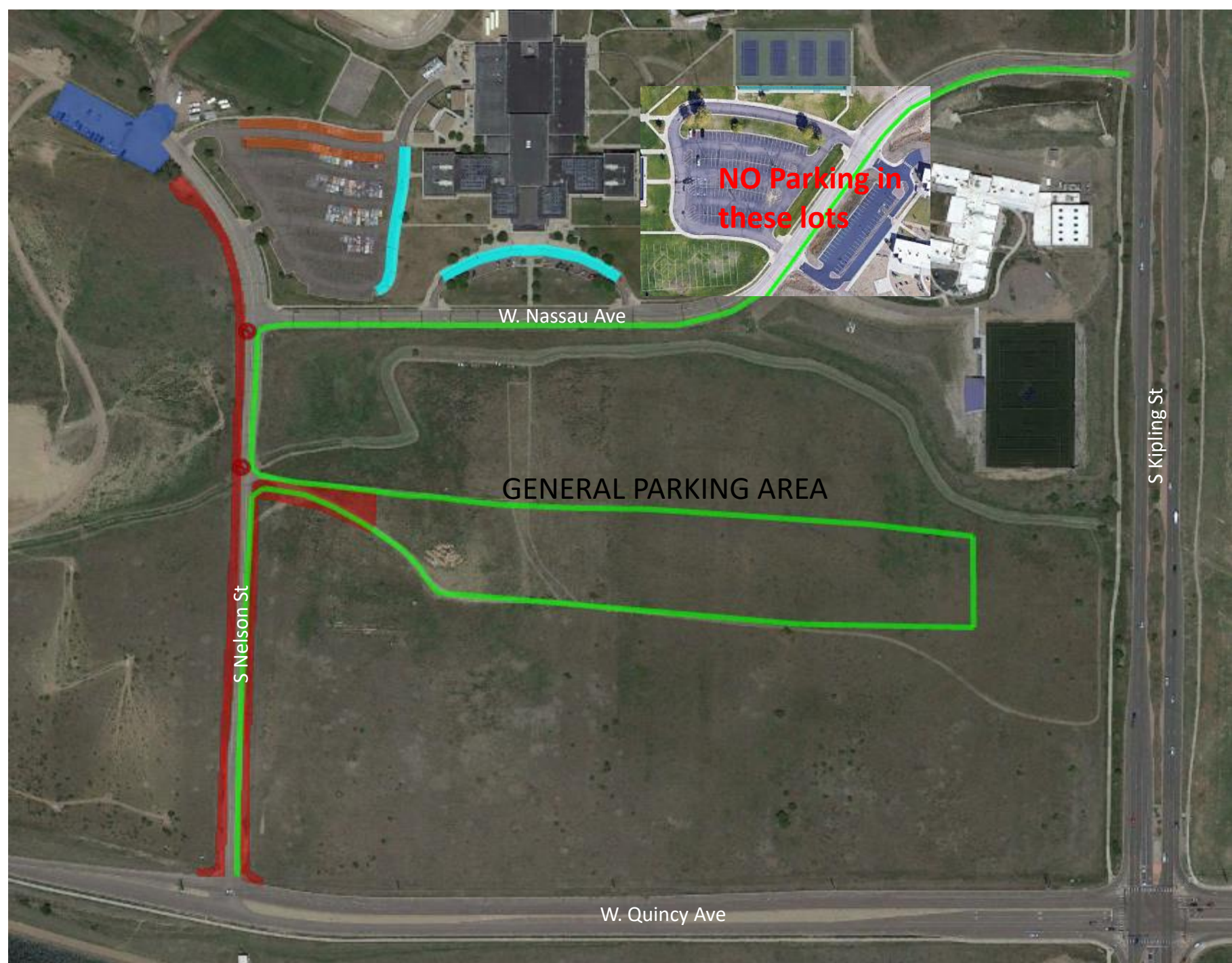
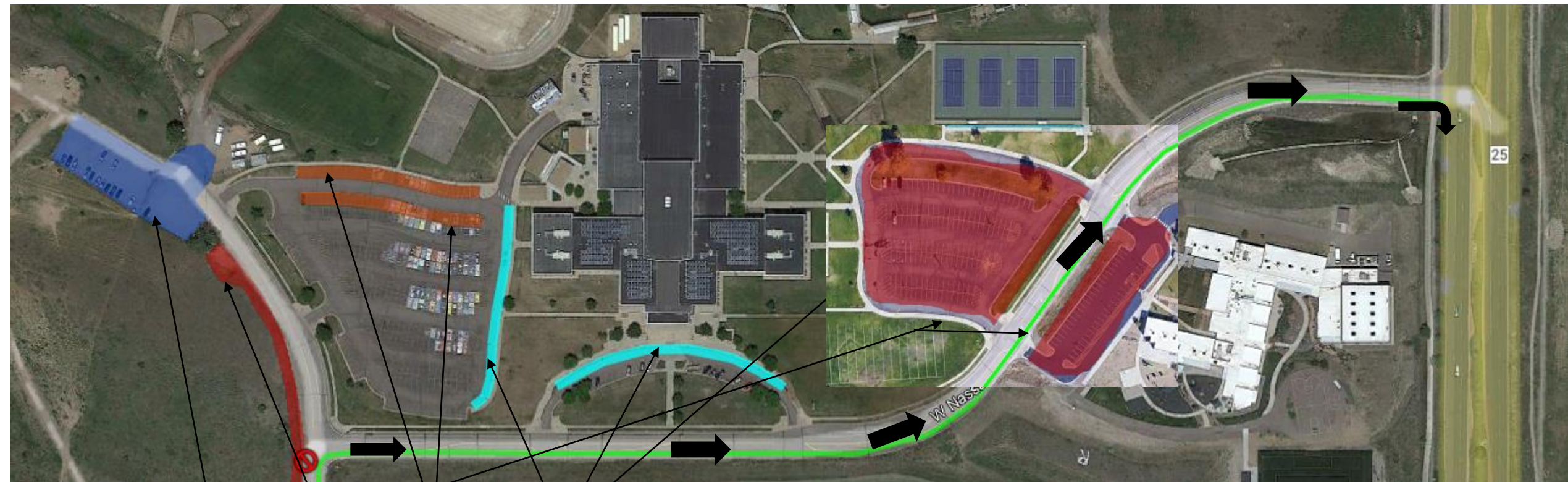


## Cross Country Parking Maps

Please see other pages for more details on the specific areas and traffic flow.

The lots are being staffed by volunteers. **Please be kind and patient.**





**A**      **B**      **C**      **D**

- A: Vendor/Event Staff Parking Only (Blue)
- B: NO PARKING (Red)
- C: Handicap Parking (Burnt Orange)
- D: Bus Parking Only (Teal)

Green line with black arrows is showing the EXIT from the General Parking lot. Exit is ONE WAY ONLY to a right turn only onto S. Kipling.

 **Player Drop off**

Follow the yellow arrows towards drop off and the blue arrows to exit. You will not be allowed to go south on Nelson. You will exit back towards S. Kipling to make a right turn. Then, a right turn onto W. Quincy will bring you back to main parking lot.



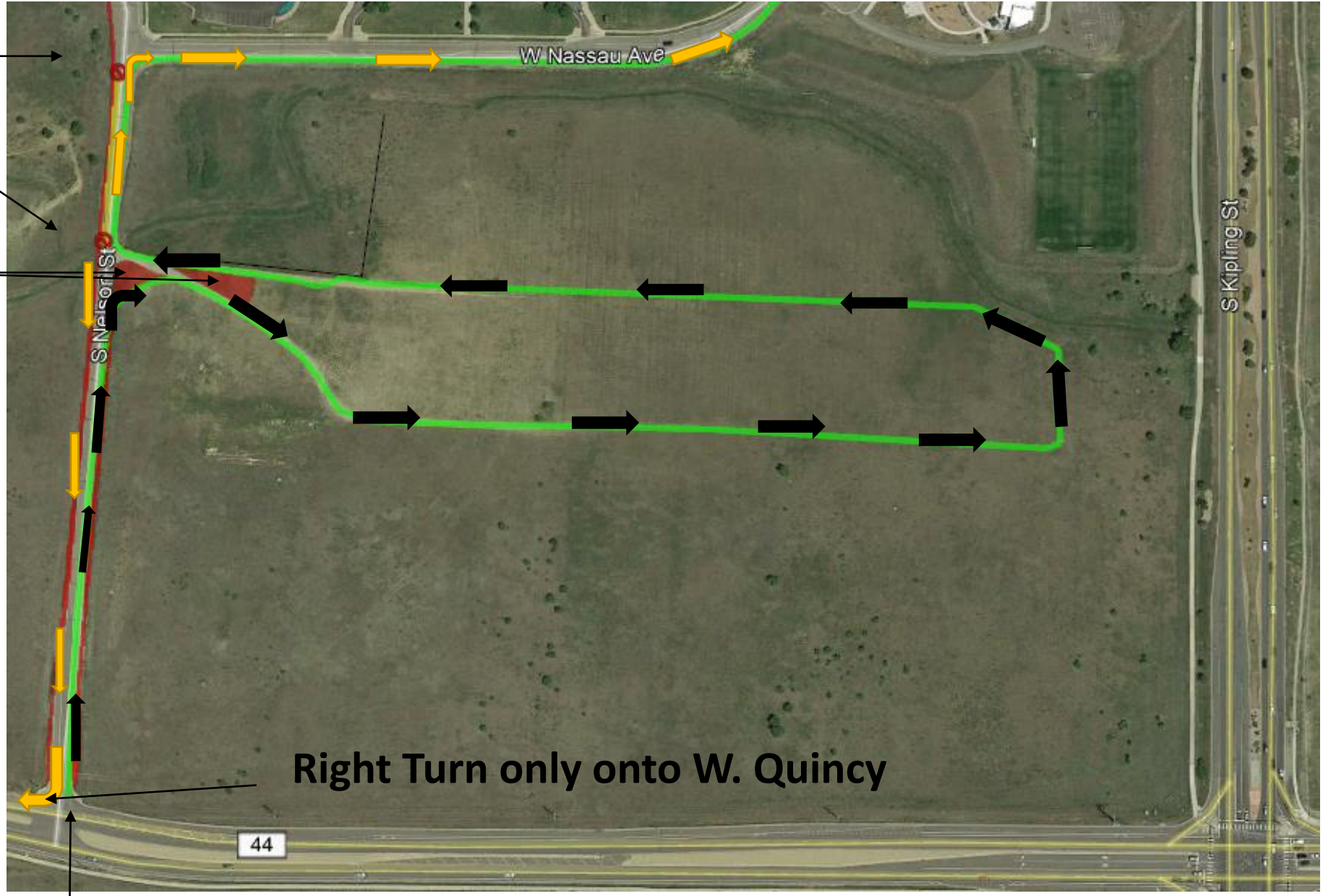
The parking lot has **ONE WAY ROADS** with separate entrance & exit. Black arrows = travel direction. Orange Arrows = exit directions to S Kipling and W. Quincy

Road Closed

No Parking in RED zones  
NO PARKING ALONG THE ROAD!

Yellow shaded area is for Pedestrians to use. **Do not walk in the traffic lane.**

Exiting cars may turn right to exit to S Kipling via W Nassau or turn left to exit on W. Quincy



Right Turn only onto W. Quincy

Enter here for General Parking lot