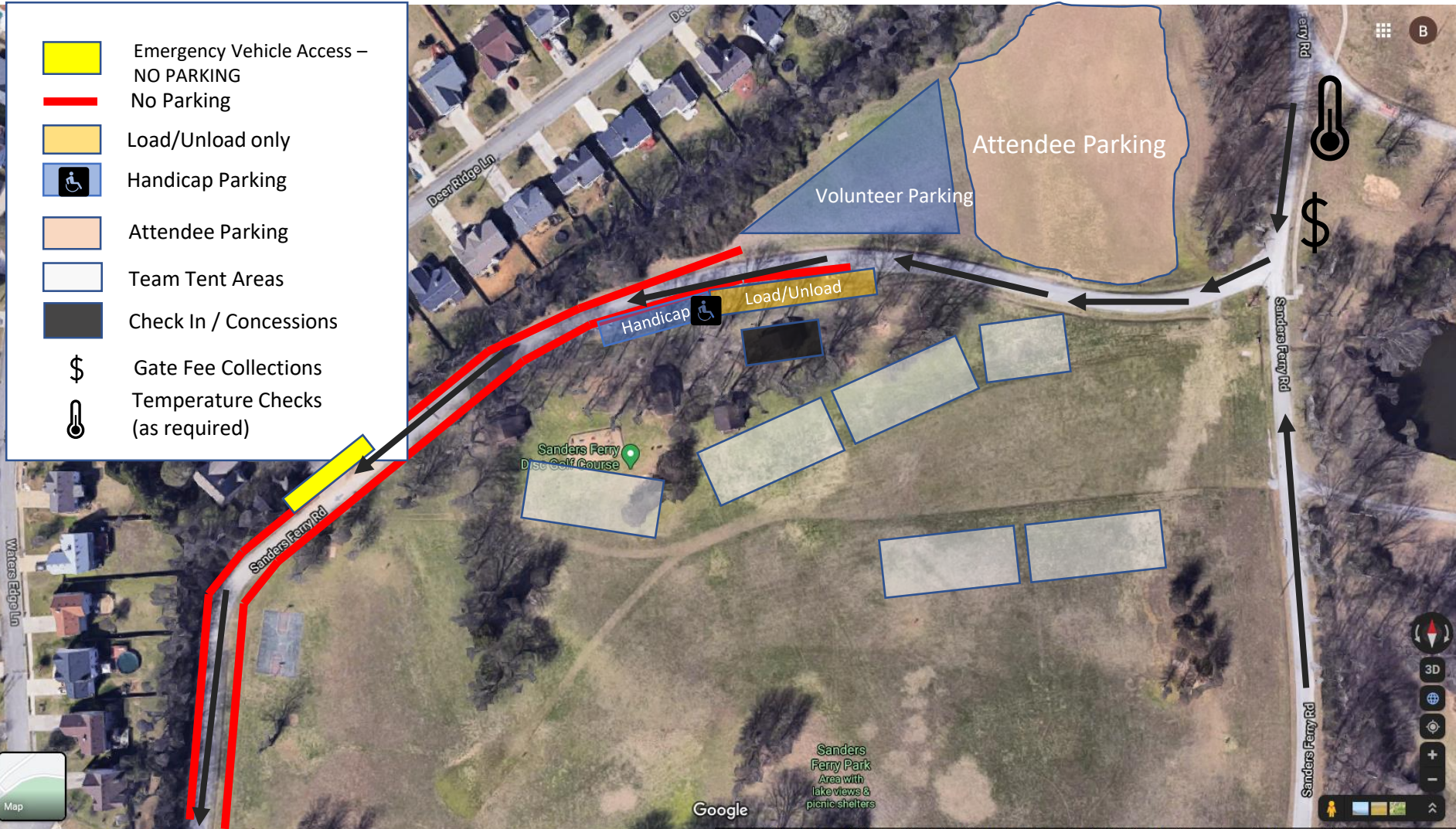


Cross Country Fans,

Sanders Ferry is a public park. There is a Disc Golf course, RC airplane field, public boat ramp, fishing pier, and picnic shelters. Other people use the park besides the Cross Country meet. Utilize the defined parking areas #1-#6 in this document. If you have to unload/load team tents, coolers, etc., utilize the designated area and do so quickly. Please follow our parking guidelines to accommodate other users of this beautiful park. Park traffic is one way around the circle. Lastly, we appreciate your adherence and patience during these busy days, please be kind to our volunteers. They are just that, and without them these events would not be possible.





Load/Unload

Handicap

NO PARK

Handicap

Add'l Parking

Volunteer Parking

Load / Unload is short term. Need to keep them moving. Pull off, set your stuff on the ground for others to gather and take to team tents, then move on. All other traffic should be directed around Sanders Ferry Rd to additional parking lots #1-#6 in that order. This accommodates traffic flow as spectators come in for later races and spectators leave from previous races.



Attendee Parking #5

#6

Volunteer Parking

Sanders Ferry Disc Golf Course

No parking along sides of Sanders Ferry Rd. Please use designated parking areas. We will fill parking area #1 first followed by #2 and so on. This accomodates traffic flow as new spectators arrive for later races and previous race spectators exit the park.

#1

#2

#3

#4

Sanders Ferry Park Shelter #8

Old Hickory Boat Ramp

Google